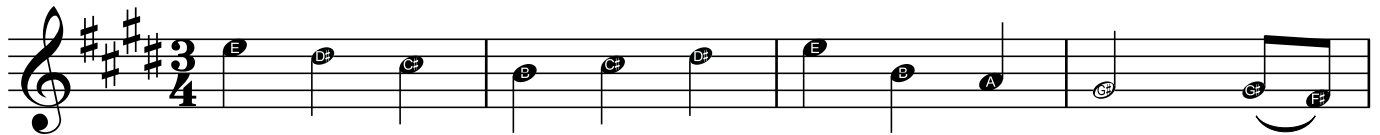


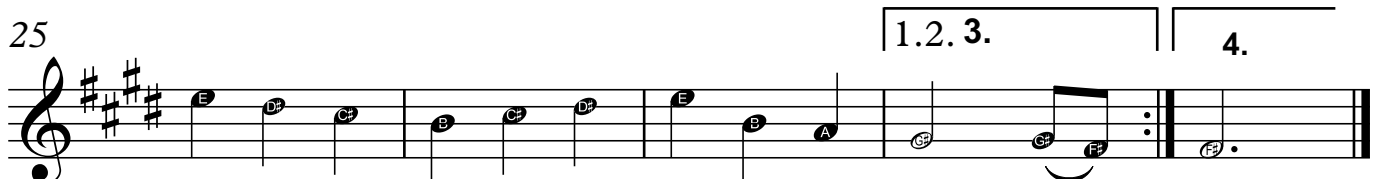
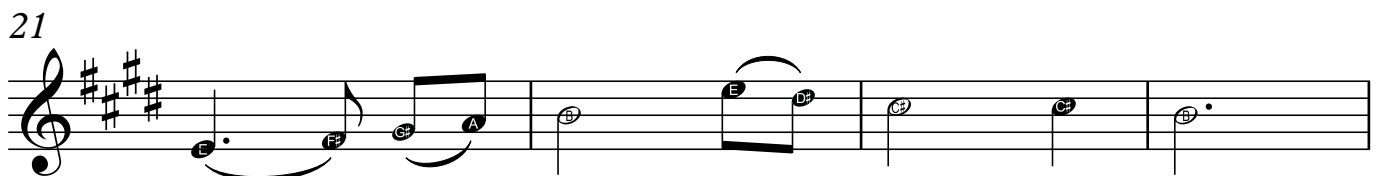
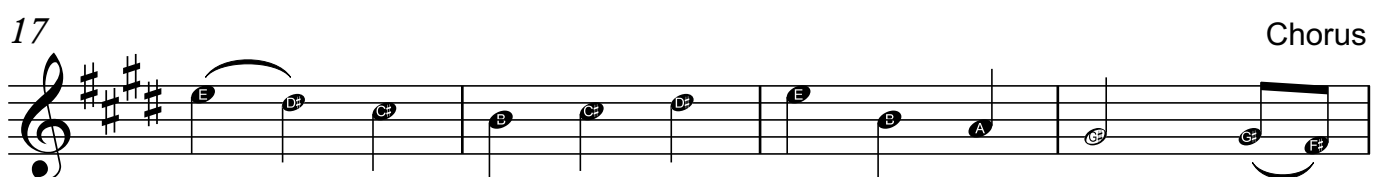
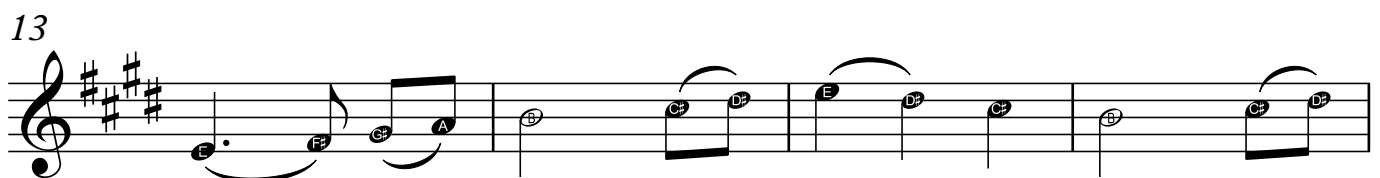
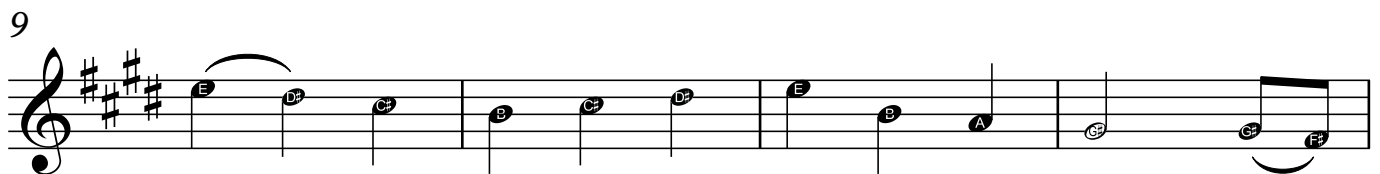
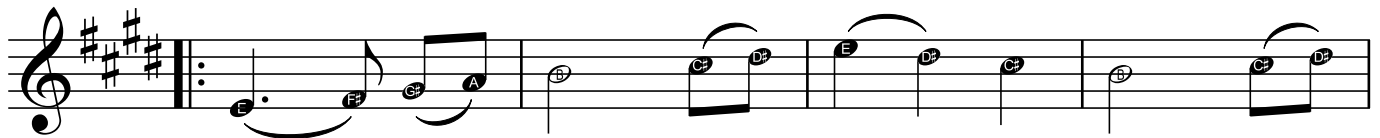
First Nowell

Traditional English

Introduction



5 Verse



Clarinet in B \flat 2 / Trumpet in B \flat 2

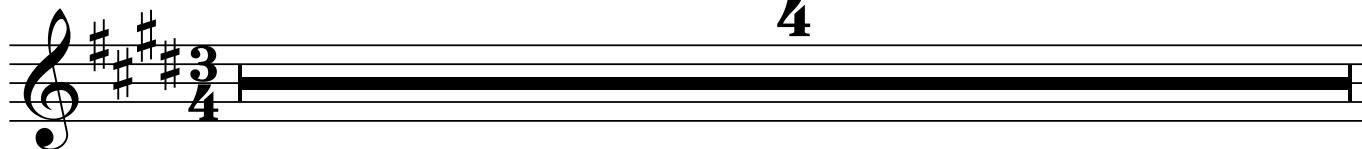


First Nowell

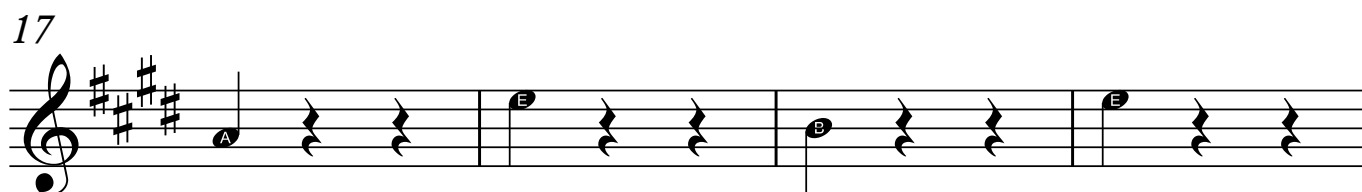
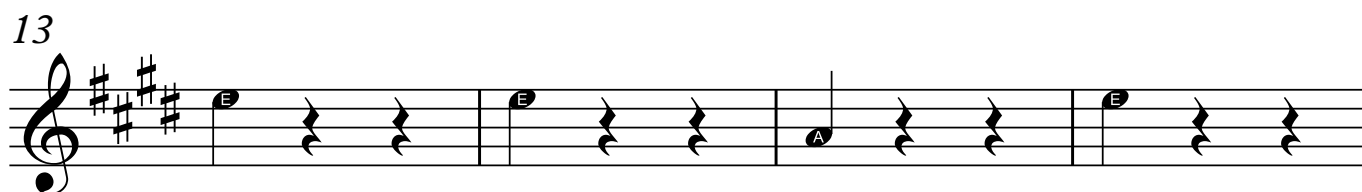
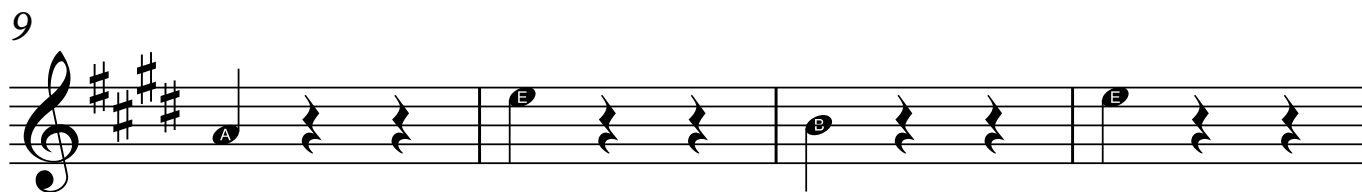
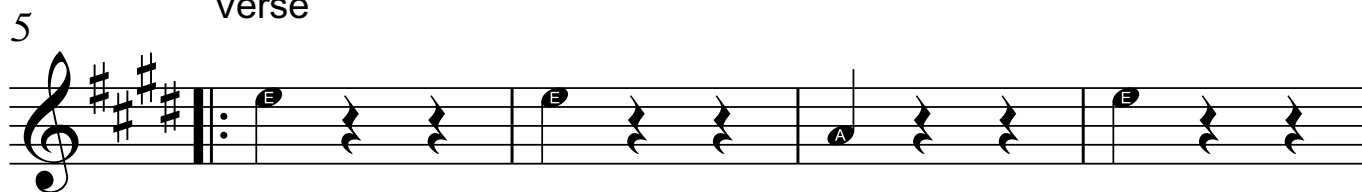
Traditional English

Introduction

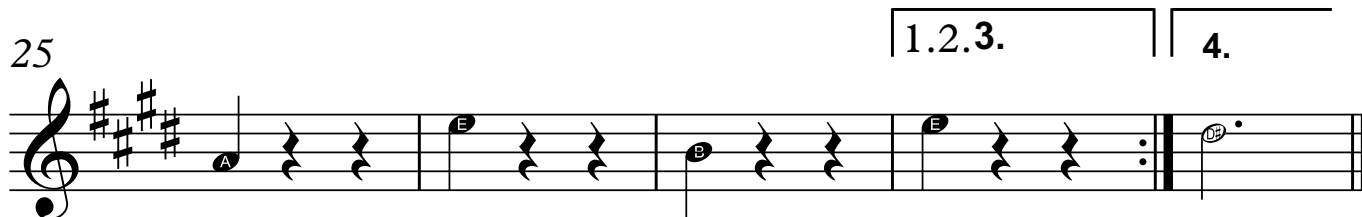
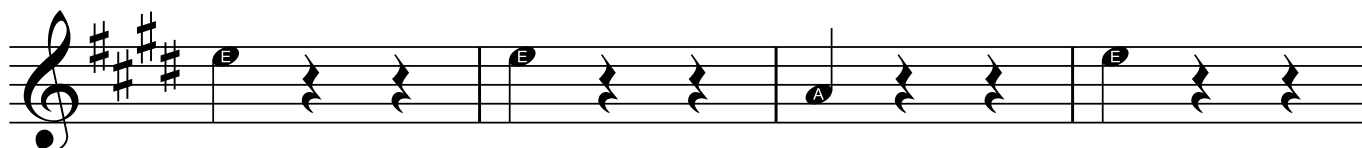
4



Verse



Chorus



Trombone 1



First Nowell

Traditional English

Introduction

Musical notation for the introduction of 'First Nowell' in bass clef, 3/4 time, with a key signature of two sharps (D major). The notes are: D4, C#4, B3, A3, B3, C#4, D4, A3, G3, F#3, and A3.

5 Verse

Musical notation for the first line of the verse (measures 5-8). The notes are: D4, E4, F#4, G4, A4, B4, C#4, D4, C#4, B4, A4, and B4.

Musical notation for the second line of the verse (measures 9-12). The notes are: D4, C#4, B4, A4, B4, C#4, D4, A4, G4, F#4, and E4.

Musical notation for the third line of the verse (measures 13-16). The notes are: D4, E4, F#4, G4, A4, B4, C#4, D4, C#4, B4, A4, and B4.

Musical notation for the fourth line of the verse (measures 17-20). The notes are: D4, C#4, B4, A4, B4, C#4, D4, A4, G4, F#4, and E4. The word 'Chorus' is written above the final measure.

Musical notation for the fifth line of the verse (measures 21-24). The notes are: D4, E4, F#4, G4, A4, D4, C#4, B4, B4, and A4.

Musical notation for the sixth line of the verse (measures 25-28). The notes are: D4, C#4, B4, A4, B4, C#4, D4, A4, G4, F#4, and E4. The first three measures are grouped under the instruction '1. 2. 3.' and the final measure is under '4.'.

Trombone 2

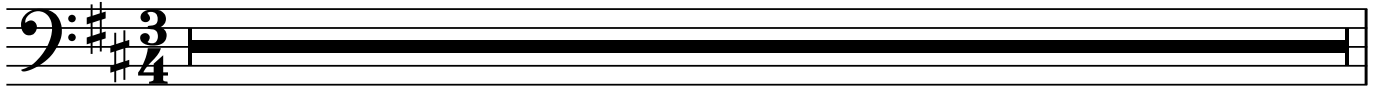


First Nowell

Traditional English

Introduction

4



5 Verse



21 Chorus

